



ELK GROVE HIGH SCHOOL

2024-2025 GUIDEBOOK

A MESSAGE FROM PAUL KELLY
PRINCIPAL OF ELK GROVE HIGH SCHOOL

Welcome to Elk Grove High School, where our graduates have left a proud legacy of achievement, community, and pride. Our amazing facilities and phenomenal staff combine to offer our current students a remarkable opportunity to create their own legacy as Grenadiers.

Elk Grove High School is recognized as a U.S. Department of Education Blue Ribbon High School and has been identified as one of America’s Best High Schools by Newsweek, the Washington Post, and U.S. News and World Report. In addition, EG was the first school in Illinois to be recognized with the RAMP (Recognized Model Program) distinction by the American School Counselor Association.



At EGHS, we proudly put the needs of our students first. Our graduates leave us not only with a clearer sense of their future pathways and goals, but also with the critical thinking skills and knowledge necessary to adapt to whatever changes may come in life. With over 60 Advanced Placement and Dual Credit college course options, we provide students with an unbelievable opportunity to excel in a diverse range of academic and career fields.

In addition to our excellence in the classroom, EGHS promotes life skills, work-based learning, and teamwork through a wide range of collaborative and competitive activities and athletics. From musical and artistic performance to interscholastic and intramural sports to international travel to career apprenticeships and internships, there truly is something at Elk Grove High School for every student.

I am absolutely confident that you will find our faculty, staff, and administration to be student-centered and supportive. We will challenge your students to be their very best, but we will always be there to help them meet those challenges. We are proud to welcome you to Elk Grove High School!

Table of Contents

Absences 5

Activities and Athletics 13

Academic and Social Supports 5

Attendance 5

Calendar of Events 2

Curriculum Introduction and Definitions 4

Community Resources 10z

Contact Information 12

Frequently Asked Questions. 10

Harper Promise Scholarship Program. 6

Health Services Information 7

High School District 214 Graduation Requirements. 3

Parent Groups 12

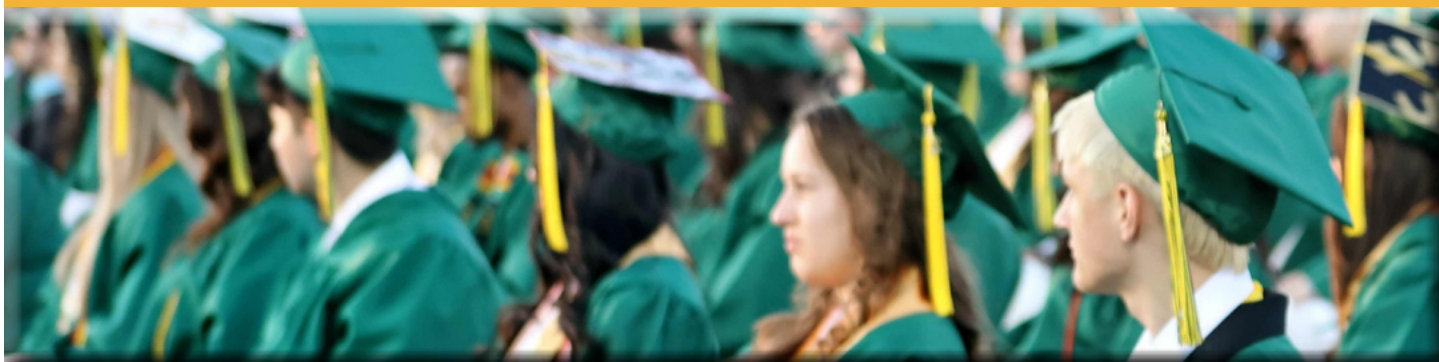
CALENDAR OF EVENTS – AT A GLANCE

August 9	FRESHMEN ORIENTATION
August 14	FIRST DAY OF CLASSES
August 29	PARENT OPEN HOUSE
September 11	COLLEGE NIGHT ZOOM - SENIOR PARENTS - ENGLISH
September 13	SENIOR PARENT NIGHT - SPANISH
December 18 - December 20	FIRST SEMESTER FINAL EXAMS
December 23 - January 3, 2025	WINTER BREAK
January 8	FIRST DAY OF SECOND SEMESTER
March 24 - March 28	SPRING BREAK
April 8	STATE ACT DIGITAL WITH ESSAY JUNIORS
April 9	STATE PRE-ACT DIGITAL SOPHOMORES & FRESHMAN
May 5- May 16	ADVANCED PLACEMENT EXAMS
May 21	GRADUATION
May 28 - 30	SECOND SEMESTER FINAL EXAMS
May 30	LAST DAY OF SCHOOL

[For more events visit the Elk Grove High School Website](#)

HIGH SCHOOL DISTRICT 214 GRADUATION REQUIREMENTS

Academic Area	District 214 Graduation Requirements
English	4.0 credits
Mathmatics	3.0 credits (4.0 credits recomendaded)
Science	2.0 credits (3.0 credits recommended)
Social Science	2 credits (3.0 credits recommended) Must include one year of U.S History or combination of U.S. History and American Government and one semester civics.
Career & Technical Educa- tion or World Languages	1.0 credits
Fine Arts	0.5 credits
Consumer Education	0.25 credits
Physical Education & Health Education	3 - 5 days of daily physical education all four years of high school and one semester of Health Education



ADVANCED PLACEMENT & DUAL CREDIT

AP courses are rigorous, college-level classes that are aligned with skills and experiences which colleges recognize though an annual examination process developed by the College Board. District 214 offers more than 30 Advanced Placement courses and AP exams.

Dual credit courses are rigorous, college-level classes that allow high school students to earn college credits while completing high school graduation requirements.

District 214 offers more than 80 dual credit courses through partnerships with several colleges and universities.

Dual credit courses provide students with college-level experiences in both core and career areas, preparation for post-secondary success, and opportunities to earn early college credit, which reduces the cost and time for earning a post-secondary degree. These courses also help students discover and pursue their futures while in high school.

Dual credit is recorded on the student's high school transcript as well as on a transcript at the partner college or university. These dual credit courses will be the first grades on a student's college academic record.

CURRICULUM INTRODUCTION AND DEFINITIONS

District 214 uses the following nationally recognized terms to help guide students through the selection of coursework and to support their decision making in preparation for their post-secondary goals.

College and Career Pathway Endorsements

Endorsements are awarded on the high school diploma to validate the work of students in preparing for particular industry sectors. Endorsement requirements include: completion of a learning plan, career-focused coursework, work-based learning, and postsecondary readiness in reading and math.

Career Cluster

Refers to the groups of the 16 nationally recognized occupations and industries that have a set of foundational knowledge and skills in common.

Career Pathway

Multi-year program of academic and technical study that prepares students for a full range of post-secondary options within each career cluster. Career pathways provide a context for exploring career options at all levels of education. Career pathways link student learning to the knowledge and skills needed for future education and employment.

D214 Career Clusters and Pathways

Finding the best way for students to learn and achieve success is of utmost importance to the State of Illinois and the nation as a whole. College and career success is critical to our national and state economy and has become a national priority. The Career Clusters and related Career Pathways serve as an organizing tool for schools, small learning communities, academies and magnet schools to develop more effective programs of study and curriculum.

The cluster level knowledge and skills set is built on a common core required for career success in the multiple occupations included in the cluster. Career and Technical Education (CTE) has been central to this call for greater college completion and the credentials that CTE provides to both traditional and nontraditional student populations and has emerged as one of the most important elements in the completion agenda throughout the country.

The Sixteen Career Clusters	
Agriculture, Food and Natural Resources	Hospitality and Tourism
Architecture and Construction	Human Services
Arts, Audio/Video Technology and Communications	Information Technology
Business Management and Administration	Law, Public Safety, Corrections and Security
Education and Training	Manufacturing
Finance	Marketing
Government and Public Administration	Science, Engineering and Mathematics
Health Science	Transportation, Distribution and Logistics



A detailed Academic Guidebook for District 214 can be found online at <https://www.d214.org/Page/2035>



ACADEMIC AND SOCIAL SUPPORTS AT EGHS

Counselor

Students work with their counselor to develop a personal academic plan. Counselors can recommend other academic supports.

Tutoring

Individual and group tutoring is available throughout the day and after school. Students are able to drop in for extra support.

- **The Mastery Lab** - Open from 8:30 AM - 3:10 PM Monday - Friday to all EG students. The lab is staffed by the coordinator, student tutors and teachers throughout the day. The Mastery Lab offers students help in all content areas. A pass from a teacher is required (except for lunch) to be in the Mastery Lab.
- **The Late Night Lab** - Open after school from 3:20 PM - 4:40 PM Tuesday - Wednesday to all EG students. The lab is staffed by content teachers and staff.

Re-Assessment Center

Students have access to make up tests and quizzes from 7:30 a.m. – 3:10 p.m. during study hall in room 128A.

Freshman Foundations

Study Hall

Social Wellness Groups

1. Organizational Group - To improve executive functioning skills
2. Positive Action - Self-empowerment and making good choices
3. Positive Pathways - To improve school attendance
4. Positive Behavior - To improve behavior
5. Depression and Anxiety Management
6. Transfer Student Group - For student who are new to EG
7. Healthy Women Group - Healthy habits for women
8. Dreamers
9. Substance Abuse Group

A variety of support groups may be offered to our students in order to assist them with specific issues and/or problems that are interfering with their success in high school. Each group meets once a week. In the fall, students will be given an opportunity to sign-up for these groups. All students indicating they are interested in participating in a group will be interviewed by their counselor to determine the most appropriate support group for them. Parents will receive a letter from the group leader informing them of their child's participation in a group.

Attendance

The Board of Education authorizes the administration to develop and enforce procedures, which ensure regular student attendance and accurate accounting for student absences. Attendance at school is required by state law. Being in the classroom, doing the assigned work, and contributing to the class, all on a regular basis are important to success in school. Only in the classroom can the student take full advantage of fellow classmates' ideas, the teacher's explanations, and other material that enriches the class.

Attendance Numbers

847-718-4401

847-718-4403 (Español)

Absences

Reporting Daily Absences

If a student is absent from school, a parent/guardian needs to call the attendance office to report the student's absence. Authorized calls will be accepted by the attendance office up to 48 hours following the absence. Failure of a parent/guardian to call will result in the absence being considered unexcused. While daily attendance is required, authorized absences are absences for "valid cause", which include, but are not limited to illness, death in the immediate family, family emergency (reviewable), court appearance, religious observances, civic event, medical or dental appointments, field trips or a prearranged college campus visit. If any of these situations occur, parents/guardians should call the attendance office at least 24 hours in advance.

Sign in and sign out procedure

When arriving late, leaving early or returning to school after an appointment, the student must sign in and out at the attendance office. The parent/guardian must call the attendance office with pre-authorization. Failure to call will result in an unauthorized absence.

FOOD SERVICE AND TRANSPORTATION

Food Services

Meals are served every school day. For the 2024-25 school year, breakfast is available for \$2.50 and lunch is \$4.00. Reduced breakfast is \$1.50 and reduced lunch is \$2.50. Milk (½ pint) is included with the meal, but may also be purchased separately for \$.60. A variety of healthy and student favorite a la carte options are available. Snacks and beverages are available for purchase. All students must use their student ID card to access meal benefits and prepayment accounts. Cash and checks are taken at all cashier registers. Menues are available online.

Online Food Service Prepayment

D214 utilizes MySchoolBucks.com for a quick and easy way to add money to your student's meal account using a credit/debit card or electronic check. The MySchoolBucks App makes school meal payments even easier for busy parents on-the-go! You can also view recent purchases, check balances, and set-up low balance alerts for FREE online or through the App! Please review the following information on our website at <https://www.d214.org/Page/3561> to assist you in answering questions should they arise. For assistance in setting up or using an account, contact the myschoolbucks.com support team at 1-855-832-5226. You will need your student's ID (found in Infinite Campus) to setup your account.

Vending Machines

Students have access vending machines without using cash by downloading the Payrange app on their phones. Payrange accepts all major credit and debit cards as well as funds from apple pay and Android Pay! Follow these steps to add money to your Payrange app: 1) Download the app to your smart phone or tablet, 2) Create an account, 3) At the bottom of the screen, click the button "Add funds." Follow the steps to add funds to the account.

Meal Assistance

To ensure your student(s) receive free or reduced-price meals, please complete the meal benefits application online through the Infinite Campus Parent Portal under the More/Meal Benefits Only one application per household is required annually (online or hardcopy). Hardcopy applications can be submitted to The Department of Food and Nutrition Services at 2121 S. Goebbert Rd, Arlington Heights, IL 60005. Paper copies are available [online](#). If your household received an automatic meal approval letter for School year 2024-25 from District 214, no further action is needed unless all your children are not listed on the letter. If your student is a freshman or new District 214, please fill out the meal application online or submit a hardcopy.

If you have any questions, please contact the Department of Food and Nutrition Services at (847) 718-7638 or (847) 718-7639.



Transportation FAQ

Who qualifies for free transportation?

Students living over 1.5 miles from their school or whose walking path to school would constitute a hazard according to IDOT qualify for free transportation. In addition, some students receiving specialized services may receive free transportation. If you are uncertain if you qualify, please contact the Transportation Department at 847-718-7470.

If I do not qualify for free transportation, can I pay a fee to allow my student to ride the bus?

Yes, please reach out to Karina Estrada in the main office at karina.estrada@d214.org for more information.

Will activity and athletics buses be provided after school?

Yes. An activity bus will leave school at 4:45 pm and an athletics bus will leave at 6:00 pm. These after-school shuttles will operate Monday-Friday on every school day.

Will I need my ID card to get on a bus?

Yes. Once issued, a student ID is needed to board a bus. As students get on and off a bus, they will tap their ID.

HEALTH SERVICES INFORMATION

Physical Examination

All 9th grade students and new transfer students must submit a physical form on the State of Illinois Certificate of Health Form that is dated within 365 days of the first day of school. The Health History portion of the Illinois State Certificate of Health must be completed and signed by a parent/guardian or it will be returned for completion.

[State of Illinois Physical Exam Form](#)

Dental Examination

All 9th grade students must submit a State of Illinois Proof of School Dental Examination Form completed within 18 months due by May 15th.

[State of Illinois Dental Exam Form](#)

Eye Exam

All transfer students that are enrolling for the first time in the State of Illinois must receive an eye examination.

[State of Illinois Eye Examination Form](#)

Immunizations/Meningococcal Vaccine

All students must be in compliance with IDPH Minimum Immunization Requirements. All incoming 12th grade students shall show proof of having received a dose of MENINGOCOCCAL CONJUGATE VACCINE (Menactra, Menveo, MCV4) on or after their 16th birthday prior to entering the 12th grade, per Illinois state mandate.

[24-25 School Year Immunization Requirements](#)

Religious Exemption Form

Please notify the health office of students with special health related needs regarding medications, life-threatening allergies, chronic medical conditions and physical education restrictions. [Health Action Plans can be found on the district website.](#)

Elk Grove High School Health Services Team
Phone: 847-718-4473
Fax: 847-718-4562 eghs.nurse@d214.org



HIGH SCHOOL DISTRICT 214 HAS A FIRST DAY EXCLUSION POLICY. STUDENTS WHO ARE NOT IN COMPLIANCE WILL NOT BE ABLE TO ATTEND SCHOOL.

HARPER PROMISE SCHOLARSHIP PROGRAM

Under the Harper College Promise Scholarship Program, every eligible public high school student in Harper's district can earn up to two years of tuition at Harper College if they maintain solid grades, have good attendance, don't repeat classes, graduate on time and provide service to their community.

All students are encouraged to sign up for Harper Promise for two simple reasons:

- Students will have the option to attend two years of Harper College tuition free, an option that they can later choose whether or not to accept.
- Meeting or exceeding the minimum eligibility requirements will help students no matter what they choose to do after high school and make it easier to attract other scholarships.

For even more details, visit the [Harper College Promise Scholarship Program](#) website today.

Registration and Recommitment

Freshmen are enrolled automatically during school registration. The program starts in the second semester of a student's freshman year. Completing and entering community service hours will not start until January 2024.

Sophomores, Juniors and Seniors must recommit each year between August 15 and September 15 using the [Harper Reccommitment Form](#).

Transfer students can enroll by completing the [paper application](#) and returning it to the College and Career Center (CCC) on or before December 15.

Track Community Service Hours

Enter community service hours using Infinite Campus (IC). Look below for those instructions. Students are encouraged to enter hours throughout the year as they earn them. Community service hours can be unique and individualized, but the service needs to benefit someone outside of the student's home. Both [www.volunteermatch.org](#) and Community Service During COVID-19 provide options for you to consider, but students are not required to use these sites. Be sure to look at your school web page for serving opportunities at your school.

- Log into IC
- Scroll down to Message Center (below Home)
- Click Surveys
- Enter all information
- Click Complete

Verify that the hours were tracked by checking your Harper Promise tab the following day to see if the hours have been added. More [detailed instructions](#) can be found here.

Appeals

Students are notified in August if they meet the criteria to continue in the program. Students dropped from the program may appeal if they do not meet criteria because of extraordinary circumstances. Go to [Harper Promise Appeal](#) to access the appeal form.

For other information or questions, including service hours and attendance, email harperpromise@d214.org or call Jackie Martino at 847-718-7734.

HARPER PROMISE SCHOLARSHIP PROGRAM

A PROMISE THAT PAYS FORWARD.

HOW IT WORKS

The criteria for the Harper College Promise Scholarship were developed by Harper College, area public high schools and northwest suburban business leaders to promote life skills and habits that will help students succeed in college and provide businesses with smart, skilled and motivated employees. The Promise Scholarship Program enables participating students to attend Harper without having to pay tuition[†] while they earn career certifications and associate degrees. However, signing up for the Promise program does not commit a student to go to Harper. So there's no reason not to sign up!

IN HIGH SCHOOL

The Program starts in the second semester of a student's freshman year in high school. If the student meets attendance, rigor, quality, persistence and community service requirements, the student can earn up to two years tuition at Harper College.



ATTENDANCE

Students may only be absent:

2nd semester of freshman year	5 days or less
Sophomore year	9 days or less
Junior year	8 days or less
Senior year	7 days or less

(3 tardies equal an absence)



RIGOR/QUALITY

Graduate college-ready.

Minimum annual grade point average (unweighted):

2nd semester of freshman year	2.0
Sophomore year	2.25
Junior year	2.25*
Senior year	2.3*

*No semester grades of D or F



PERSISTENCE

- ✓ Meet minimum credit standards at the end of each year.
- ✓ Graduate on time with their class.



COMMUNITY SERVICE

Number of hours per year:

2nd semester of freshman year	5
Sophomore year	10
Junior year	15
Senior year	20

AT HARPER COLLEGE

A high school student who meets the Program's requirements will earn the first semester of Harper tuition free. The student can continue to attend Harper College tuition-free, semester by semester, for up to four semesters (for a total of 60 credit hours inclusive of dual credit, AP credit or prior college credits earned before enrolling at Harper.)[†], if the student meets the following criteria.



RIGOR/QUALITY

Minimum grade point average:

1st semester	2.2
2nd semester	2.3
3rd semester	2.5
4th semester	2.5

No grades of D or F or withdrawal



PERSISTENCE

- ✓ A student must attend full-time each semester. (minimum 15 credit hours)
- ✓ A student must attend each consecutive semester (fall/spring) until their certificate or degree is completed—up to four semesters.
- ✓ Summer session tuition is not included in the program.



COMMUNITY SERVICE

Service requirements must be performed through a Harper-related program.

Number of hours per semester:

1st semester	10
2nd semester	10
3rd semester	10
4th semester	10

All participants are required to fill out a Free Application for Federal Student Aid or FAFSA (Social Security number required) and complete the financial aid process. [†] The Promise Scholarship is for tuition only. Fees and books are additional. See Harper's website for current tuition and fees.

Visit harpercollege.edu/promise for full program details. Program requirements subject to change.

harpercollege.edu/promise

 Harper College

Harper College is committed to the policy that all persons shall have equal access to its programs, facilities, and employment without regard to race, color, creed, religion, national origin, sex, age, marital status, disability, public assistance status, veteran status or sexual orientation. 2020/01/21 J.D.

COMMUNITY RESOURCES

ELK GROVE AREA YOUTH AND FAMILY SERVICES

HOTLINES	
National Domestic Violence Hotline 800-799-SAFE (7233)	Illinois Domestic Violence Hotline 847-221-5680
National Suicide and Crisis Hotline 988 (talk or text) 800-SUICIDE (784-2433)	Illinois Safety Hotline 844-4-SAFEIL (723345) to talk SAFE2 (72332) to text
Northwest CASA Sexual Assault Crisis Hotline: 888-802-8890	
HEALTH SERVICES	
Advocate Children's Medical Group Adolescent Medicine Park Ridge - 847-318-9300	Greater Family Health 847-608-1344 / 844-599-3700
Cook County Department of Public Health * Arlington Heights - 847-934-7969	Access Community Health * 866-267-2353
MENTAL HEALTH ASSESSMENTS AND HOSPITALS	
Ascension Alexian Brothers Behavioral Health Walk-ins available- 855-383-2224	Northwest Community Hospital Behavioral Health Appointments are required - 847-618-4160
Streamwood Behavioral Health Main - 630-837-9000	Chicago Behavioral Health 844-756-8600
Compass Health, Chicago and Northbrook Appointment required - 844-576-4634	Edward-Elmhurst Health - Linden Oaks 630-305-5027
COUNSELING, MENTAL HEALTH & GROUP SERVICES	
Center for Emotional Wellness * 815-526-3750	Elk Grove Township Youth Services 847-981-0373
Hamdard Center 630-835-1430	Kenneth Youth Center * 847-524-8800
Lutheran Social Services * 847-640-7954	Omni Youth Services * 847-353-1500
Personal Growth Associates 847-413-9700	Polish American Association * Children and Family Services - 773-282-8206
ALCOHOL & DRUG TESTING/TREATMENT	
True Test Labs Drug Screening - 847-258-3966	Al-Anon/Alateen * 847-358-0338
F.A.I.R (Families and Adolescents in Recovery) 847-359-5192	Gateway Alcohol and Drug Treatment Program Chicago 877-241-5394
Haymarket Center 312-226-4357	Rosecrance 815-391-1000
CHILD ABUSE REPORTING	
IL Dept. of Children and Family Services (DCFS) To report: (800)-25-ABUSE (22873)	

COMMUNITY RESOURCES

ELK GROVE AREA YOUTH AND FAMILY SERVICES

DOMESTIC VIOLENCE	
Life Span* Domestic & Dating Violence - 847-824-0382	Mujeres Latinas en Acción* 708-442-1299
WINGS Domestic Violence Shelter - 847-519-7820	
SEXUAL ASSAULT	
CHICAGO Rape Crisis Hotline* Crisis Hotline - 888-293-2080	Northwest Center Against Sexual Assault* (NWCASA) 847-806-6526
PREGNANCY HEALTH SERVICES	
Caris Pregnancy Counseling At Willow Creek Care Center - 312-229-5700	Cook County Health Department Prenatal Nursing Services - 847-818-2860
Life Span* (312) 408-1210	
SHELTERS	
Catholic Charities* (312) 655-7700 MAIN	The Harbour, Inc. 847-297-8540
Shelter, Inc. 847-255-8060	National Runaway Switchboard 800-786-2929
Journeys "The Road Home" 847-963-9163	
LEGAL RESOURCES	
Chicago Legal Clinic* 312-726-2938	Catholic Charities Legal Assistance (CCLA)* 312-948-6821 LEGAL (312) 655-7700 MAIN



FREQUENTLY ASKED QUESTIONS

How may my student see his/her counselor privately?

Students are encouraged to come to the office during lunch, open period, study hall or after school. If his/her counselor is not present, they may fill out a message sheet with the secretary.

What kind of support services are available?

There are several support groups offered during the school day. Parents and students may contact the counselor to access services by the school psychologist and social worker.

Are there late afternoon buses for students involved in sports and after-school activities?

Yes. Monday through Friday, buses leave at the back entrance at 4:45 pm and 6:00 PM.

What courses are available in the summer?

Look for an email from D214 around March 1st. Generally, summer school registration begins on April 1st. Students will register via the Summer School Portal.

How do I obtain homework for my absent child?

For brief absences (3 days or less), please e-mail individual teachers for homework. If your student will be absent 10 days or more, please contact the Student Services Secretary at 847-718-4422. Homework requests may take 24 hours to fulfill.

Where is my child's bus stop and what time does the bus pick up my child?

Check Infinite Campus under Transportation

Are there special eligibility requirements if my child wants to play sports?

To see if your child is eligible, check Infinite Campus under the Health Tab

SOFTWARE SYSTEMS & USER ACCOUNTS

Infinite Campus

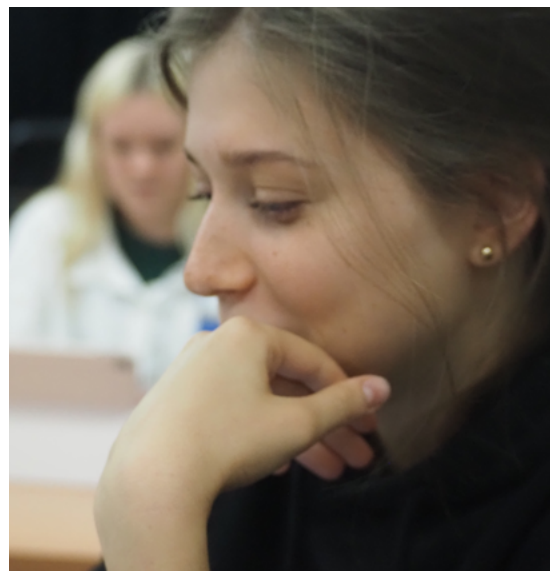
Infinite Campus (IC) is used to manage student data including schedules, grades, attendance, contact information, Harper Promise status, outstanding fees, service hours, assignments and more. Parents of incoming freshman were sent an email in the spring of their student's 8th grade year to set up their IC account. If you need assistance please contact the Elk Grove Help desk at 847-718-4444 or email egshelpdesk@d214.org. To access Infinite Campus click [here](#) or go to the [EGHS home-page](#) and click on the Infinite Campus icon. An IC app is also available to download.



Setting up your Ipad

Freshmen and transfer students follow these instructions to set up your new Ipad! If you need assistance please call the Elk Grove High School Help desk at 847-718-4444.

[IPAD Setup Instructions](#)



ACTIVITIES

Activist Club	Folkloric Dance	Polish Club
American Red Cross Club	French Club	Principals' Advisory Council
Anime Club	French Honor Society	Robotics Club
Art Club	Graphic Design Club	Scholastic Bowl
Asian Student Association	Gay Straight Alliance	Science Club
Athletic Trainer Aide	Grenadettes Dance	Shakespeare Club
Auto Club	Health Careers Club	Skills USA
Bass Fishing Team	HOSA	Spanish Club
Best Buddies Program	Investment Club	Spanish Honor Society
Book Club	Italian Club	Speech Team
Cheer	Italian Honor Society	Student Ambassadors
Chess Team	Japanese Exchange	Student Council
Chicano College Bowl	Jazz Band	Theater Tech Crew
Color Guard	Marching Band	Variety Show
Cricket	Mastery Lab Tutors	Video Gaming Club
Debate Team	Math Team	Vocal Jazz
DECA	Musical	Wildstang Robotics
Dungeons & Dragons	Mock Trial	Winter Guard
EG Fierce	NATION Spirit Club	Women's Acapella
EG Film Club	National Honor Society	Write-On Club
EG Magazine	Newspaper - Guardian	Yearbook - Montage
Environmental Club	NJROTC	Young Blacks United
eSports Club	One Acts Plays	Youth Advisory Council
Estudiantes Unidos	Orchesis Performance	

EGHS promotes life skills, leadership opportunities, and FUN through a wide range of competitive and collaborative co-curricular activities. Our athletic teams are highly competitive in the rugged Mid-Suburban League, showing toughness and tenacity in the face of opposition. Our fine and performing arts groups inspire outstanding achievement within and beyond our walls, instilling passion for performance and skill in expression. Dozens of clubs and groups give our students a source of camaraderie and enjoyment in areas ranging from ping-pong to environmental awareness to Latino dance! There truly is something at Elk Grove High School for every student.



For more information on activities and athletics visit the co-curricular website at <https://www.d214.org/domain/82>



ATHLETICS

Fall

Boys Cross Country
Girls Cross Country
Girls Flag Football
Football
Boys Golf
Girls Golf
Boys Soccer
Girls Swimming & Diving
Girls Tennis
Girls Volleyball

Winter

Boys Basketball
Girls Basketball
Girls Bowling
Competitive Cheer
Competitive Dance
Girls Gymnastics
Boys Swimming & Diving
Boys Wrestling
Girls Wrestling

Spring

Girls Badminton
Baseball
Boys Lacrosse
Girls Lacrosse
Girls Soccer
Softball
Boys Tennis
Boys Track & Field
Girls Track & Field
Boys Volleyball
Boys Water Polo
Girls Water Polo



ASSOCIATE PRINCIPAL FOR ACTIVITIES

Jackie Randall - jackie.randall@d214.org

ATHLETIC DIRECTOR – Kirk Macnider - kirk.macnider@d214.org

ASSISTANT ATHLETIC DIRECTOR – Terry Beyna - terry.beyna@d214.org

CONTACT INFORMATION – ELK GROVE HIGH SCHOOL

500 W. ELK GROVE BOULEVARD • ELK GROVE VILLAGE, IL 60007 • 847-718-4400

ADMINISTRATION

Principal	Associate Principal	Associate Principal	Associate Principal
Paul Kelly paul.kelly@d214.org	Activities & Operations Jackie Randall jackie.randall@d214.org	Curriculum & EL Mary Kemp mary.kemp@d214.org	Student Services Stephen Kolodziej stephen.kolodziej@d214.org
Division Head	Division Head	Division Head	Division Head
CTE, Drivers Ed, & PE Jon Pieper jon.pieper@d214.org	English & Fine Arts Mecca Sadler mecca.sadler@d214.org	Math & Science TBA	Special Education Adam Clayton adam.clayton@d214.org
Division Head	Division Head	Division Head	Division Head
World Language & Social Science Mary Krall-Meske mary.krallmeske@d214.org	Student Success, Safety & Wellness Steven Lesniak steven.lesniak@d214.org	Student Success, Safety & Wellness Rebecca Schilz rebecca.schilz@d214.org	Student Success, Safety & Wellness Ruby Orozco ruby.oroeco@d214.org
Athletic Director	All Staff Directory		Attendance
Kirk Macnider kirk.macnider@d214.org	EGHS Website		847-718- 4401 847-718- 4403, (Español)

PARENT GROUPS

Welcome to the Parent Nation! Elk Grove High School truly has something for everyone, including the families of our students. Our Nation consists of five different parents groups, join one or all!

The Parent Teacher Council or “PTC” supports staff, students and non-athletic activity groups. The Grenadier Athletic Boosters or “GAB” supports our student athletes and teams. The Elk Grove Band Association or “EGBA”, and the Orchestra and Choir Boosters support their respective groups in the Fine Arts area.

CHORAL BOOSTERS

Contact Information: e.g.choralboosters@gmail.com

ORCHESTRA BOOSTERS

Contact Information: egorchestraboosters@gmail.com

EGBA – ELK GROVE BAND ASSOCIATION

Website: <http://www.eghsbandboosters.com>

Contact Information: egbapresident@gmail.com

PTC – PARENT TEACHER COUNCIL

Contact Information: ptcpresident.eghs@gmail.com

GAB – GRENADIER ATHLETIC BOOSTERS

Website: <https://sites.google.com/view/grenadier-athletic-boosters>

Contact Information: eghsgab@gmail.com

CONTACT INFORMATION – ELK GROVE HIGH SCHOOL

500 W. ELK GROVE BOULEVARD • ELK GROVE VILLAGE, IL 60007 • 847-718-4400

STUDENT SUPPORT TEAMS

Class of 2028 Pod	Counselor Steve Gordon Last Names A-L 847-718-4454 steve.gordon@d214.org	Counselor Brandi Rojas Last Names M-Z 847-718-4450 brandi.rojas@d214.org	Social Worker Melissa Trowbridge 847-718-4452 melissa.trowbridge@d214.org	Social Worker Deanna Ligman 847-718-4479 deanna.ligman@d214.org
Class of 2027 Pod	Counselor Scott Deutsch Last Names A-L 847-718-4453 scott.deutsch@d214.org	Counselor Alex Sanchez Last Names M-Z 847-718-4607 alexander.sanch@d214.org	Psychologist Sam Vittorino 847-718-4746 samantha.vittorino@d214.org	Social Worker Deanna Ligman 847-718-4479 deanna.ligman@d214.org
Class of 2026 Pod	Counselor Anna Foecking Last Names A-L 847-718-4448 anna.foecking@d214.org	Counselor Debra Ohler Last Names M-Z 847-718-4516 debra.ohler@d214.org	Psychologist Chris Melecio 847-718- christoper.melecio@d214.org	Psychologist Sean Mulcrone 847-718-4457 sean.mulcrone@d214.org
Class of 2025 Pod	Counselor Aleksandra Dimitrov Last Names A-L 847-718-4448 aleksandra.dimitrov@d214.org	Counselor Heather Decook Last Names M-Z 847-718-4451 heather.decook@d214.org	Psychologist Sean Mulcrone 847-718-4457 sean.mulcrone@d214.org	Social Worker Jeanette Huerta 847-718-4457 jeanette.huerta@d214.org

OTHER RESOURCES

Postsecondary Counselor	Latino Family Liaison	Latino Family Liaison	Family Outreach Specialist
Anthony Miocic 847-718-4441 anthony.miocic@d214.org	Stephanie Cortez 847-718-4778 stefanie.cortez@d214.org	Jose Del Real 847-718-4619 jose.delrealaceves@d214.org	Monica Bhatia 847-718- monica.bhatia@d214.org
Postsecondary Counseling Assistant	School Nurse	School Nurse	Administrative Assistant Student Services
Victoria Stencil 847-718-4442 victoria.stencil@d214.org	Morgan Vogel 847-718-4773 morgan.vogel@d214.org	Robert Flores 847-718-4685 robert.flores@d214.org	Esther Lopez 847-718-4422 esther.lopez@d214.org
School Resource Officer	EGHS Tip Line		
Miguel Mosqueda 847-718-4511 miguel.mosqueda@d214.org	847-718-4551		